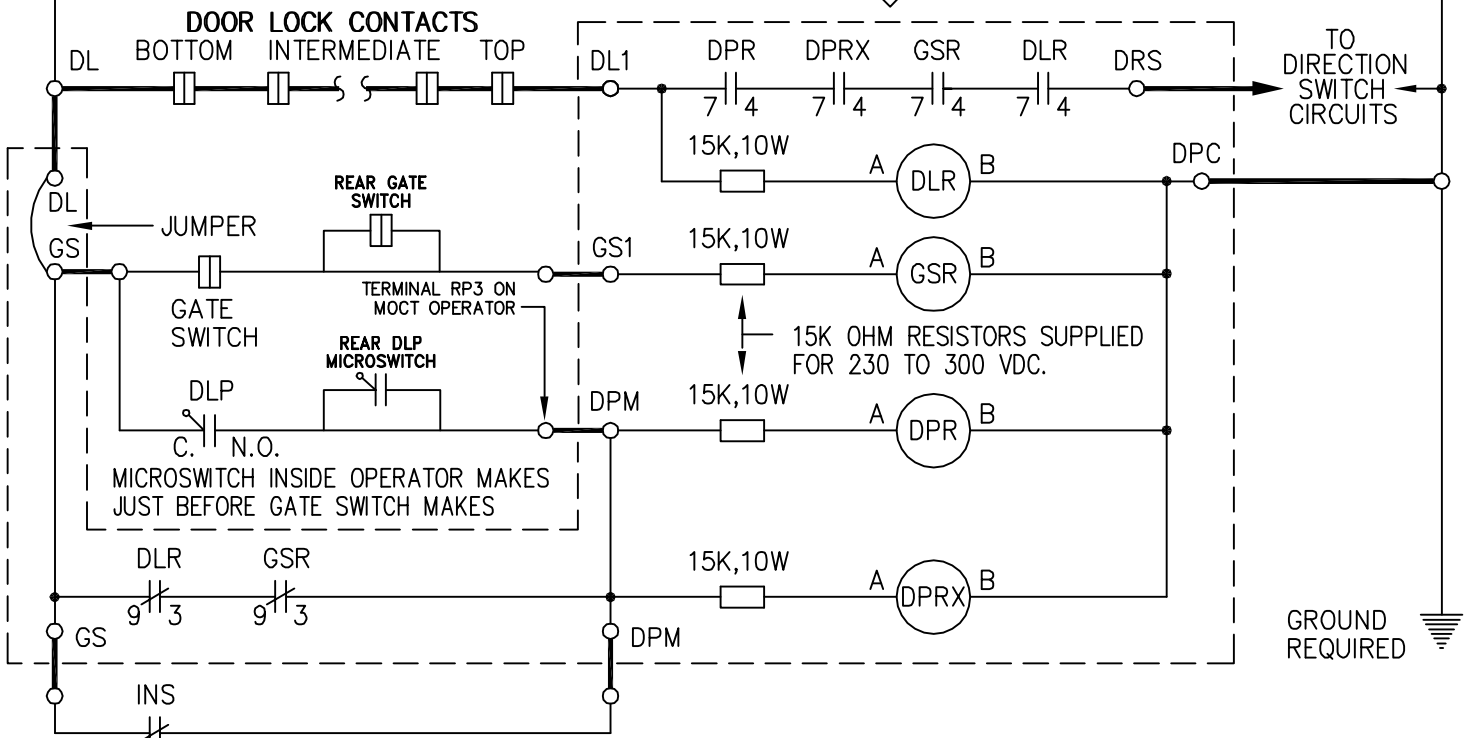
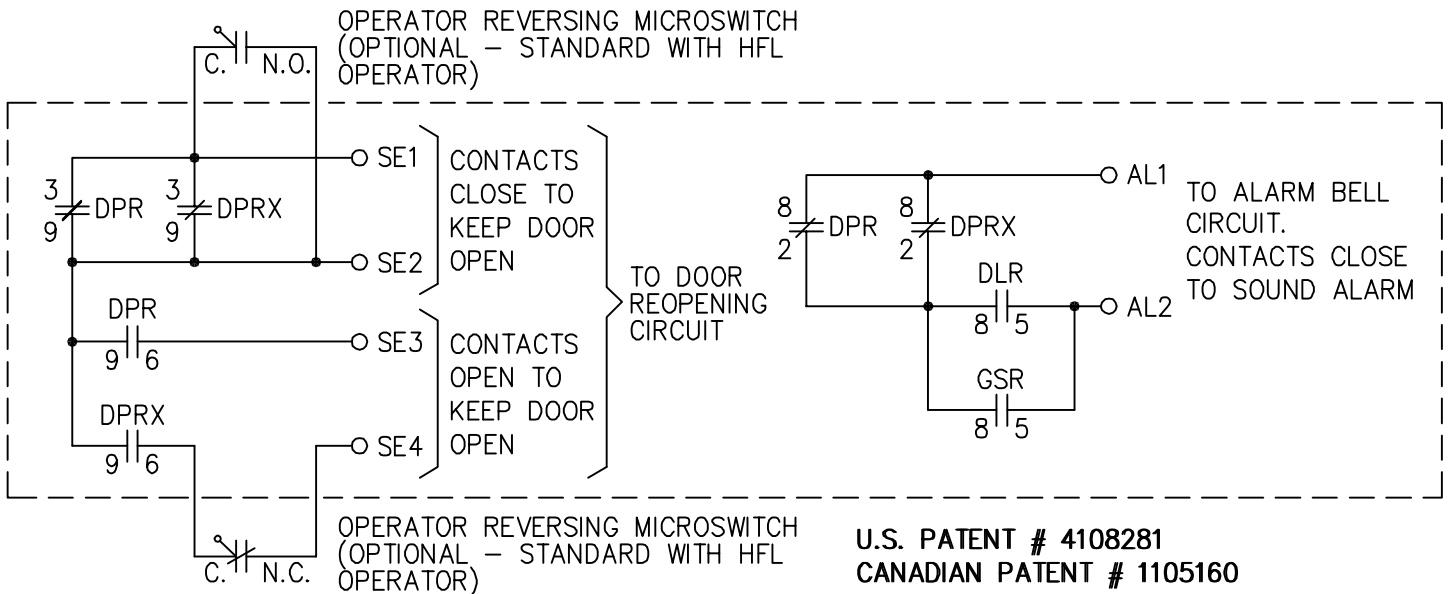


**ADVISE EXISTING POWER SUPPLY**  
( LINE MUST BE GROUNDED AS SHOWN )

CIRCUITS INSIDE DOTTED BOX ARE SUPPLIED BY G.A.L.  
AND LOCATED IN ELEVATOR MACHINE ROOM.  
HEAVY LINES DENOTE FIELD WIRING.



"INS" CONTACT LOCATED ON ELEVATOR CONTROLLER CLOSED ON INSPECTION OPERATION.  
NEEDED FOR ANY OPERATION WHICH REQUIRES THE CAR TO RUN WITH DOORS OPEN AND  
GATE OR DOOR LOCKS INTENTIONALLY BYPASSED. (ACCESS SWITCH OPERATION, ETC.)



**U.S. PATENT # 4108281**  
**CANADIAN PATENT # 1105160**  
**OTHER U.S. AND FOREIGN PATENTS PENDING**

No.	REVISION	DATE	CHK.
3	ADDED REAR DOOR MICROSWITCH	4-99	G.D.C.
2	DESIGNATION REVISED FROM HHA TO HFL	10-97	
1	ADDED OPERATOR REVERSING MICROSWITCH	8-16-94	



G.A.L. MANUFACTURING CORP.  
50 E. 153rd STREET BRONX, N.Y. 10451

SCALE	NONE
DWG. BY	T.P.
CHK. BY	G.D.C.
DATE	12-10-93

**ELEVATOR DOOR TAMPERING SYSTEM**  
TYPE "FM" (FAULT MONITOR) ALSO SUPPLIED WITH HFL OPERATOR

S7475